



PHOXENE

FLASH TECHNOLOGY

**Sx-IP Xenon Flash
& accessories
commercial brochure**

Presentation

IP67 compact and versatile xenon flash

Sx-IP is a compact and versatile xenon flash. With both a large burst capacity and a high average power, Sx-IP is suitable for various applications.

Coming in an IP67 aluminum enclosure, Sx-IP is ideal for outdoor and harsh environment.

Sx-IP integrates RS485 Modbus communication and advanced features for smart control, monitoring and configuration.



Main use cases:

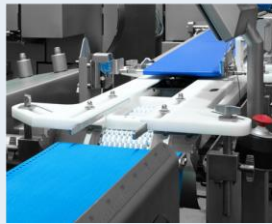
Traffic Enforcement



Precision Farming



Industrial Control



Ride Photography



Experience and Reliability

With extensive experience in flash design, manufacturing and commercialization, Phoxene offers durable and reliable industrial flashes.

Versatility and adaptability

Sx-IP can be equipped with a wide variety of lamps, reflectors and windows to suit our customers' needs.

Back panels as well as interfaces can be customized or designed according to customers' specification.

Performances

60J

2J to 60J flashes energy (more on request)

Thanks to Sx-IP electrical and optical efficiency, the amount of light projected on the target is much more important than it could be expected of a classic 60J xenon flash

Output
Power

30W continuous output power in all conditions

50W intermittently or according to conditions



Sx-IP has important burst capacity and can output up to four consecutive 60J flashes with only 30ms delay between flashes



Sx-IP allows up to 15Hz continuous flash repetition rate (2J flashes)



12°x40°, 20° x 30° or 50° x 80° standard beams.

Other beams available on request

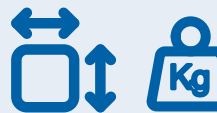


Sx-IP is protected against water with IP67 grade

It can be used in exterior and in harsh environments



Sx-IP has smart features and RS485 Modbus connectivity



H 95mm x W 136mm x L 185mm

1,5kg

Smart features



Monitoring and control

Sx-IP comes with a build-in RS485 Modbus interface that allows full configuration, control and monitoring.

This link allows to:

- Monitor flash parameters like actual settings, internal temperature, flashes, lamp and time counters and so on.
- Configure hardware inputs and outputs (function, electrical level, polarity)...

Versatile interfaces

Sx-IP offers up to :

- Four 5V / 3.3V inputs.
- Two 12V / 5V inputs
- Two open-drain outputs
- Two isolated outputs

All inputs and outputs can be affected to any available function.

Advanced Triggers

- Adjustable trigger delay
- Up to four trigger inputs with individual energy level settings.
- 16 factory configured energy levels



Day / night switch

One of the input can be configured to switch between primary and alternate energy levels. It can be used for example to change energy settings between day and night.



And more Advanced features

- Adjustable trigger delay
- Configurable synchronization output signal with adjustable delay
- Configurable lamp health monitoring
- Feedback signals (Done, Ready, Fault...)
- Energy regulation algorithm...

Accessories

Phoxene offers a wide range of accessories to support integrators

Universal holder



We can provide a mechanical interface that can be screwed on the Sx-IP enclosure. It provides:

- Six M5 threads for industrial integration.
- One standard 1/4" camera thread allowing easy installation on all commercial camera tripod.

2 axes orientable support

This kit allows flash direction adjustment:

- +/-22° horizontally
- +/-45° vertically



Mating connectors

We can provide connectors to be used with Sx-IP

Modbus service cable

The Sx-IP Modbus service cable is a USB to RS485 adapter that allows direct connection of a Sx-IP device to a computer



Service power supply

To accelerate your development, we can provide 24V 5A power-supplies assembled with a Ceres connector.

All accessories can be customized based on your requirements

How Phoxene supports you :

Guidance and expertise

Thanks to its great experience concerning flash devices and to the skills in electronics, optics, mechanics and software, Phoxene will provide you support to recommend you a solution that fulfill your needs.

Customization

Our flash devices are developed, assembled and tested by our team in France.

It gives us the opportunity to customize our products (interfaces, software, electrical performances, optics, housing...)



Sx-IP Python library

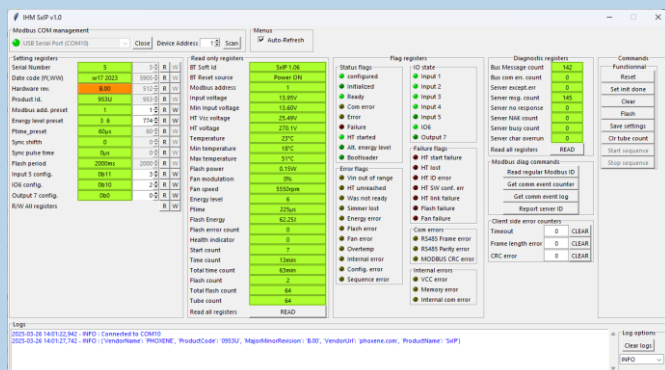
Phoxene has developed python driver that can be used to manage PHOXENE's flash devices.

Service software

A service software is available for window platforms and Linux platforms on request.

This software allows:

- Configuration
- Monitoring
- Test
- Firmware update



After sales

Phoxene product are designed to operate for years.

In the event of breakdown of a device, Phoxene after sales service will propose you cost effective repair.





PHOXENE

7, chemin des hirondelles - 69570 Dardilly – France

+33 (0)4 37 90 02 46 Contact@phoxene.com

www.phoxene.com